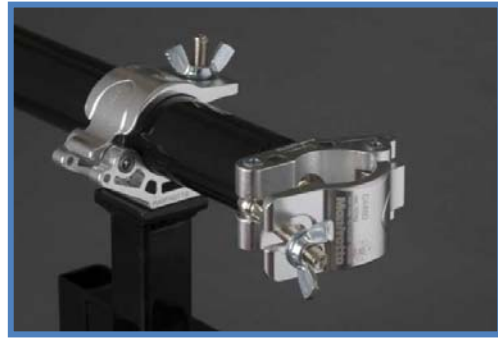


The Cavitator™

iBall Instruments LLC.® Drilling Fluid (Mud) Gas Extractor



- Ruggedized Thick Steel Construction
- Extra Thick Plastic Powder Coated Textured SureGrip Finish
- 1,000 lb. Adjustable Clamping System
- Rugged Stainless Steel Cavitation Forks
- Under 50 lb.
- Lightweight and Easy to Install
- DC Model is Powered from the Bloodhound
- Extracts More Gas Than Expensive Agitators
- Extreme Torque to Weight Ratio
- Contaminate Sealed D.C. Motor
- Operates at Low-Voltage D.C. (OR)
- **Explosion Proof C1 D1 Atex Air Motor (OR)**
- **Explosion Proof C1 D1 Atex AC Motor(OR)**
- **Explosion Proof C1 D1 Atex DC Motor**

The Cavitator *BY FAR* is the best priced, best performing, lightest, safest, most reliable and easiest to set up gas extraction system on the market today. Improvements to the Cavitator system are being made constantly as customer feedback allows us to perfect this extremely versatile gas extraction system.

Recently the Cavitator has had improvements in technology and design by improving the DC motor design, adding safety features to the Air Powered motor design, as well as the roll out of a new explosion proof AC motor option.

The Cavitator is available from:

iBall Instruments LLC.
303 Wimbledon Rd.
Edmond Oklahoma, 73003
405 341 2434



TRY THE NEW CAVITATOR TODAY!

www.iBallInst.com

Cavitator Specifications

ITEM	NOMINAL	RANGE	DETAIL/NOTES
DC Motor Beater Assembly	1/4 HP	12 – 24VDC	Sealed construction UL recognized, CE compliant Replaceable as an assembly -20 to +155 Deg F Operation, Class 1 Division 1 Explosion Proof
Air Motor Beater Assembly	.88 HP	48 scfm	Speed @ Max Power 3,000 RPM, 1.7 lb/ft, includes muffler, water separator, safety pop off valve, Class 1 Division 1
AC Motor Beater Assembly	1/4 HP	120/230VAC	Hazardous Location AC Motor, Class 1 Division 1, 2F, G, Explosion Proof
Cavitator Clamp	.095" Wall Tubing	*	All Welded Steel Construction (10-year warranty)
Cavitator Arm	.095" Wall Tubing	*	All Welded Steel Construction (10-year warranty)
Cavitator Barrel	.095" Wall Tubing	*	All Welded Steel Construction (10 year warranty)
Finish	*	*	Black Powder Coat (Chemical Resistant Primer with Polypropylene Powder Coating)
Hardware	*	*	Stainless Steel Nuts, Screws, and fasteners
Power Supply (See Note)	*	110VAC/ 220VAC Input	Optional Power Supply available if used without Bloodhound Gas Detection System
Beater Assembly	*	*	Stainless Steel tines press fit on balanced shaft
System Clamps	*	*	Adjustable 1,000 lb Cast Aluminum Clamping System
Total Weight	38.2 lbs	*	Includes clamping assembly and DC motor/beater assembly
Dimensions	34.0"	*	Total Height

Note: DC Cavitator is normally powered from Bloodhound Gas Detector and Chromatograph System.

iBall Instruments LLC.
3540 National Drive, Norman OK 73069
405-341-2434

Rev 16, 2016 Nov